

Our Route to Net Zero

2022-2023 Carbon Footprint Report & Reduction Plan



envision

Contents

Introduction	3
.....	
Route to net zero	4
.....	
Emission scopes	5
.....	
Our impact	6
.....	
Carbon reduction plan	7
.....	
Carbon offsetting principles	8



Introduction

Envision is a leading sustainability, energy and building services design consultancy that provides specialist support towards sustainability within the built environment.

We were founded in 2012 by directors of a multi-disciplinary planning and engineering consultancy and have steadily grown into a well-established company. Unlike many sustainability consultancies that have developed as a 'support service' to larger engineering or real estate advisory businesses, our sole focus is on providing market leading sustainability advice.

Envision is actively involved in the pursuit of net zero carbon buildings. Advancing net zero is now recognised as one of the most pressing and urgent need within the built environment, requiring substantial and co-ordinated effort to meet our goals for climate change mitigation. Envision help to deliver this change by combining our expert knowledge of energy and carbon profiling, with life cycle assessment (LCA) and engineering feasibility to develop net zero strategies and solutions which are pragmatic and deliverable.

At Envision, we believe that we have a vital role to play in mitigating the impacts of the built environment and have a duty to embed sustainability within everything we do.

Ensuring that we limit warming within the next two decades to 1.5°C is critical to avoid the most devastating impacts of climate change.

This is why we have made a commitment to be a net zero organisation by 2030.

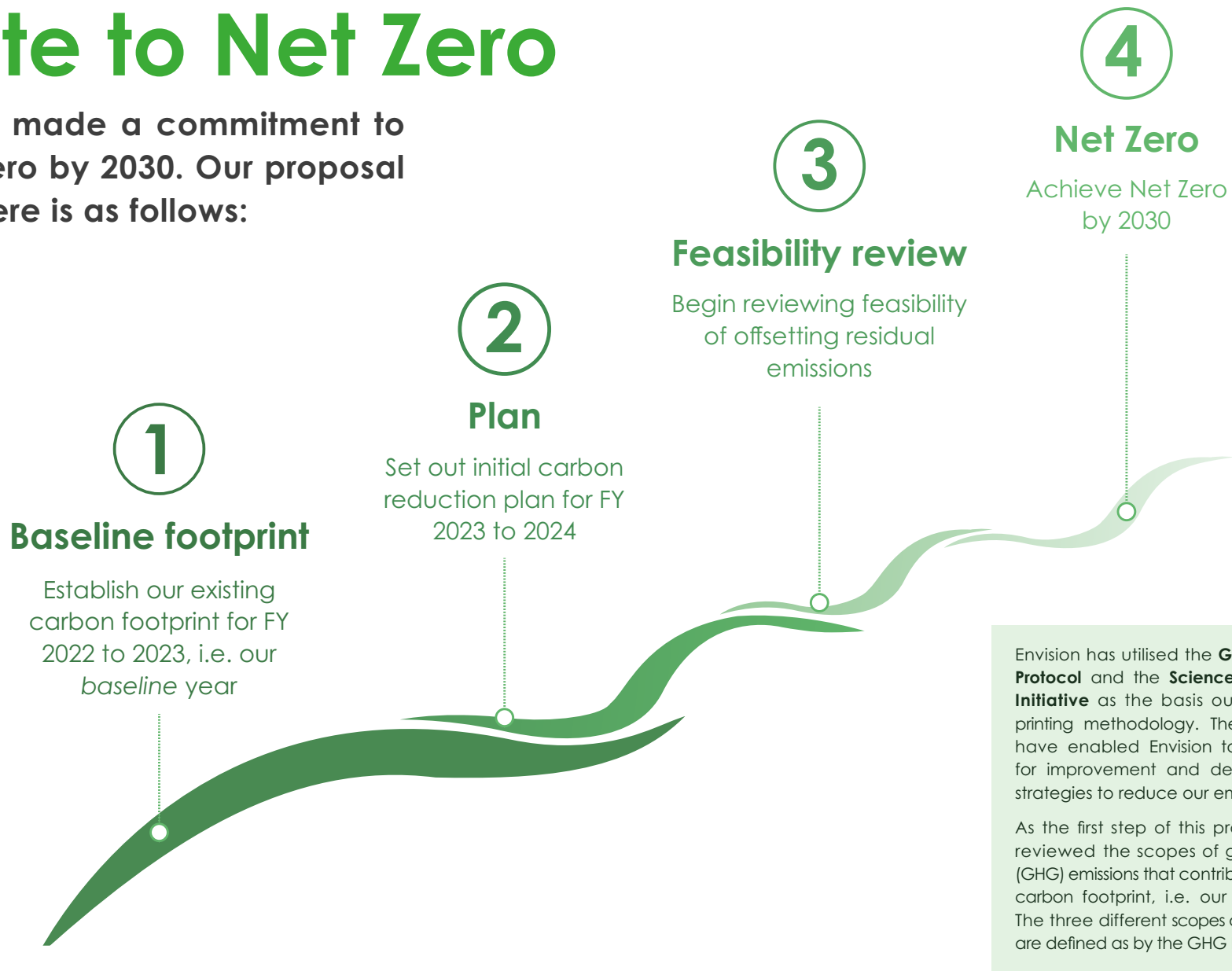
Our carbon reduction plan, sets out pathways to align our company's emissions to 1.5°C science based targets for our entire value chain emissions and review the feasibility of offsetting our company's residual emissions. We are committed to monitoring progress and updating our strategies as our business grows and develops to ensure we are on track to meet the collective need to decarbonise as well as our commitment to net zero by 2030.

→ We aim to be
Net Zero by 2030



Route to Net Zero

We have made a commitment to be net zero by 2030. Our proposal to get there is as follows:

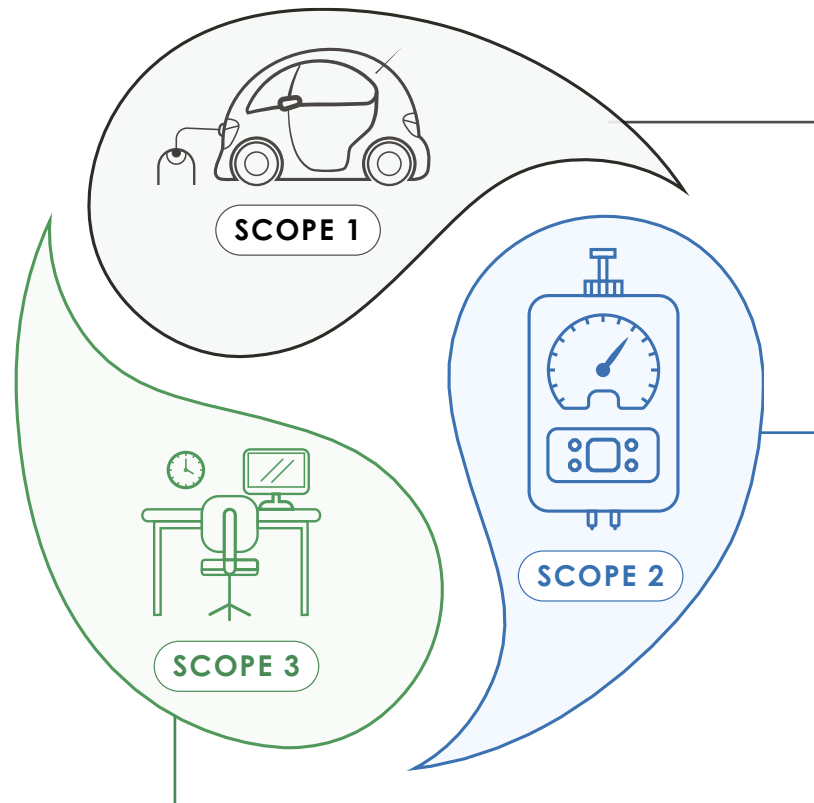


Emission Scopes

Understanding the different scopes of GHG emissions is a critical foundational step in developing any effective and all-encompassing emissions reduction strategy.

The aim here at Envision is to use this information to identify areas of the business that are the primary contributors to the company's carbon footprint and develop targeted measures to reduce these emissions in alignment with our commitment to be net zero by 2030. By addressing all three scopes of emissions simultaneously, Envision can make a significant contribution to reducing greenhouse gas emissions and help to mitigate our impacts of climate change.

Understanding the different scopes of GHG emissions is the first step in developing an effective emissions reduction strategy. Our aim is to use this information to identify areas of the business that are the primary contributors to the company's carbon footprint and develop targeted measures to reduce these emissions in alignment with our commitment to be net zero by 2030.



'Direct emissions'

Scope 1 emissions are what is referred to as direct emissions from sources that are owned or controlled by a company. For example, at Envision this would include the use of gas for heating and electricity within the associated offices and the use of petrol within company owned PHEVs.

'Indirect emissions'

Scope 2 emissions refer to indirect emissions associated mainly with utility consumption, this would include purchased electricity, heat, and water. In regard to Envision this would include any company owned electric car use, as well as any electrical use within company owned PHEVs.

'Other emissions'

Scope 3 emissions refer to any 'other' indirect emissions that are associated with the company's operations but occur outside of the company's direct control. As a general note, Scope 3 emissions are often the most challenging to measure and manage, however, they are also an essential component of a comprehensive emissions reduction strategy. In the case of Envision this would include employee commutes, sustenance consumed on company time, IT equipment, project travel, working from home and hotel stays.

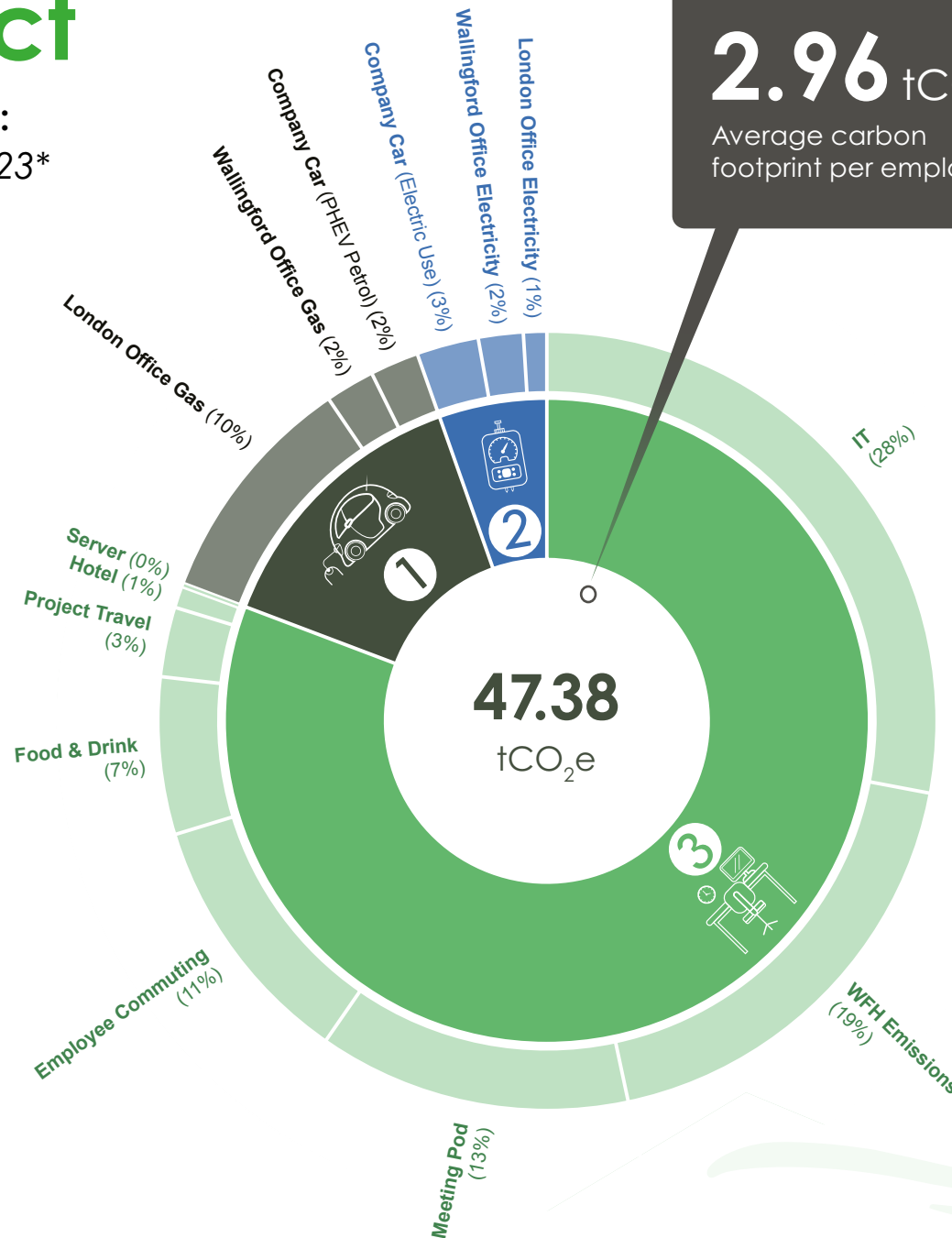
Our Impact

Envision Carbon Footprint: Mar 1st 2022- Feb 28th 2023*

Calculations

All emissions have been calculated with the most relevant 2022 emission factors as published by the Department for Business, Energy and Industrial Strategy (BEIS). In terms of the operational boundaries for the GHG inventory, the following emission sources were included:

- **Energy consumption at leased office spaces:**
 - » Electricity
 - » Natural Gas
 - » Purchased Steam
- **Energy consumption at employee homes while working from home (WFH)**
- **Business Travel**
 - » Work-related Air Travel
 - » Work-related Vehicle Use (incl. rental car, taxi, personal vehicles)
 - » Work-related public transportation
 - » Work-related rail travel
- **Employee commuting**
- **Cloud service emissions**
- **Supply chain emissions from purchased goods**
 - » (e.g office supplies, computers, etc.)



2.96 tCO₂e
Average carbon footprint per employee

Emission Scope:

- 1 **Direct emissions** (6.56 tCO₂e) (14%)
- 2 **Indirect emissions** (2.56 tCO₂e) (5%)
- 3 **Other emissions** (38.26 tCO₂e) (81%)

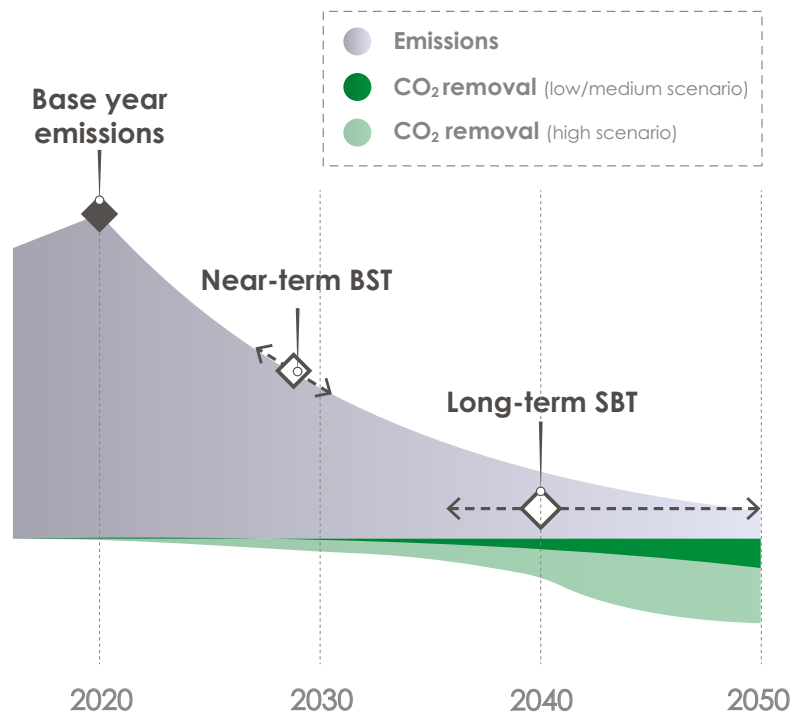
The majority of emissions are associated with **Scope 3**, specifically the supply chain emissions. In the below figure that is broken out into the exact categories. This shows that Envision's highest emissions are associated with IT equipment (28%), WFH Emissions (19%), office meeting pod (13%), office gas use (12%) and Employee commuting (11%).

*This is the first year Envision has undertaken an account of the company's emissions and thus will be used as the baseline year for emission reduction targets.



Carbon Reduction Plan

Envision has reviewed the results from our baseline year GHG emissions calculations and has detailed targeted areas for reduction to align with best practice for emissions associated with company operations.



From our baseline year GHG emissions calculations, we have identified key areas for reduction. From our analysis we have identified various options to **begin decarbonising our operations** and in alignment with science based targets and our **commitment to achieve net zero by 2030**. These options include:

- » As our office leases end, we will review the potential of relocating to ensure **our office space meets higher sustainability standards**, not only for decarbonisation, but for the health and wellbeing of our employees. All future office space will be all-electric.
- » Envision policy will **restrict plane travel on all domestic projects**. We will also limit work on projects that require site visits to within the UK to reduce emissions associated with plane travel. If travel is required, seek alternative lower impact transport options.
- » Consider office renovations (i.e. impact of meeting pod) from a carbon emissions perspective and challenge whether they are necessary. If renovations are required ensure a circularity plan is in place for end of life / end of tenancy.

- » Any **company cars must be all electric by 2025**, as they are currently a mixture of hybrid and electric vehicles.
- » Create a more robust data tracking system to **quantify emissions associated with projects** we are working on and ensure the projects we are working on align with our decarbonisation goals when we have influence.

At present, Envision acknowledges that we have not included the carbon emissions associated with the projects we consult on in our carbon footprint reporting. This omission is primarily due to the current complexity and difficulty of accurately reporting on these emissions. However, we are committed to addressing this limitation and will actively work towards including project-related emissions in our future carbon footprint reporting as further industry guidance is released. By incorporating these forthcoming guidelines, such as the latest 'Buildings Science Based Target Setting Guidance and Tool' by the SBTi, we will ensure a more comprehensive and transparent assessment of our overall carbon footprint, reinforcing our commitment to environmental responsibility and sustainability.

Carbon Offsetting Principles

Residual Emissions

Residual emissions are any greenhouse gas emissions which will still exist after all technically and economically feasible steps have been taken to remove emissions. In reaching net zero carbon, residual emissions will need to be offset.

Carbon offsetting is a strategy where contributions are made to a project or development, which aims to remove CO₂ from the atmosphere or, produce a CO₂ emission reduction. This can include schemes such as reforestation projects, energy efficiency programs, and renewable energy projects. As we strive to reach net zero, carbon offsetting can be used as a mitigation strategy to help manage the residual emissions.

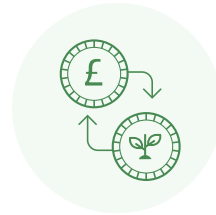
We will be aligning our due diligence with the carbon offsetting protocols and standards of the UK Green Building Council (UKGBC) and the Science-Based Target Initiatives (SBTi), ensuring we are purchasing high value and effective carbon offsets. Certifying bodies, such as the Gold Standard, are currently considered best practice in the carbon offsetting industry.

Envision will be looking at projects which have a direct emission removal to have an immediate impact on our emissions but also to avoid any projects which may still occur even without the investment or still result in greenhouse gas emissions. To achieve **net zero by 2030**, our primary focus is reducing our emissions. Envision will compensate for the remaining residual emissions that are more difficult to decarbonise, by investing in initiatives that reduce and remove greenhouse gases, guided by industry best practices.



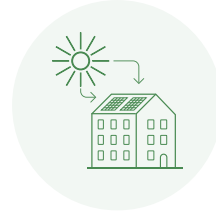
Real

All emission reductions and removals and project activities that generated them, are proven to have taken place.



Additional

The project must demonstrate that (1) the project could not take place without the carbon finance from selling credits, and (2) project-based emission reductions or removals are additional to what would have occurred if the project had not been carried out.



Avoid Social and Environmental Harm

For a project to produce high quality offset credits, it should significantly contribute to social and environmental harm.



Independently verified

The project must have independent verification. The verifier must be an accredited and recognised independent third party.



Avoid leakage

The project must show that it has accounted for the indirect effects of the project emissions, known as 'leakage'.



Unique

No more than one carbon credit can be associated with a single emission reduction or removal of 1 metric ton of carbon dioxide equivalent (CO₂e).



Permanence

The carbon credits are to represent permanent reductions and removals. Where a project carries a risk of reversibility, adequate safeguards are to be in place.



Measurable

All emission reductions and removals are to be quantifiable through a recognised measurement tool, against a credible emissions baseline. Overestimation of emission reductions must be avoided.

Envision

www.envisioneco.com

info@envisioneco.com

—
8-9 Stephen Mews
Fitzrovia
London
W1T 1AF

+44 020 7486 0680

—
Howbery Business Park
Benson Lane
Wallingford
Oxfordshire
OX10 8BA

+44 018 6559 8698

envision

